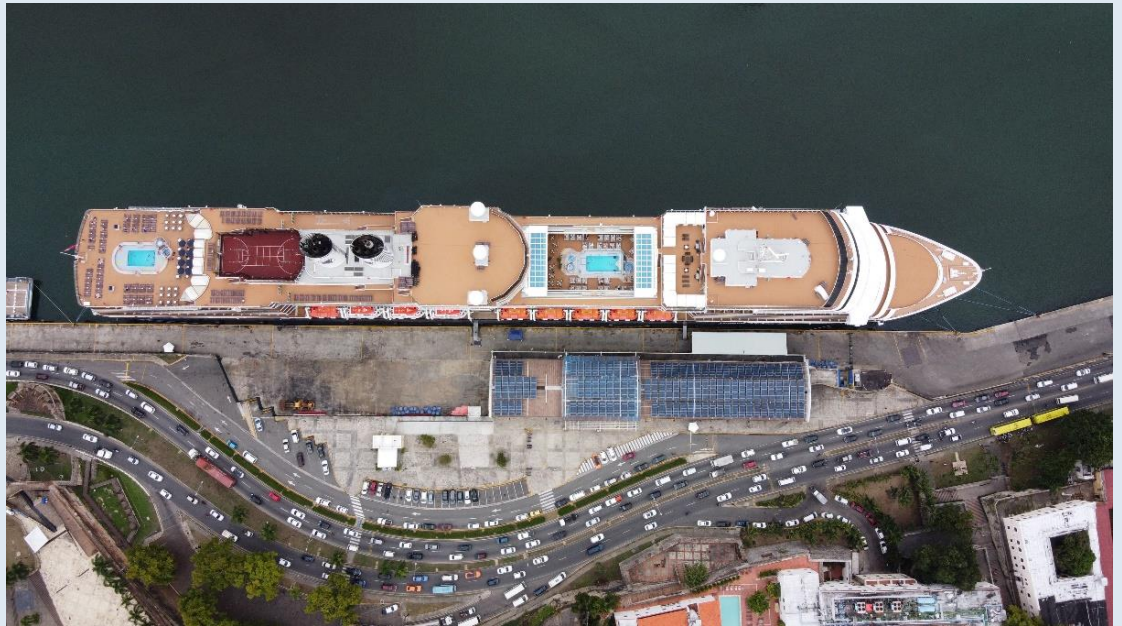


PORT INFORMATION GUIDELINE



Jul/21

Port of Santo Domingo (SANSOUCI)

Coordinates & Important Details

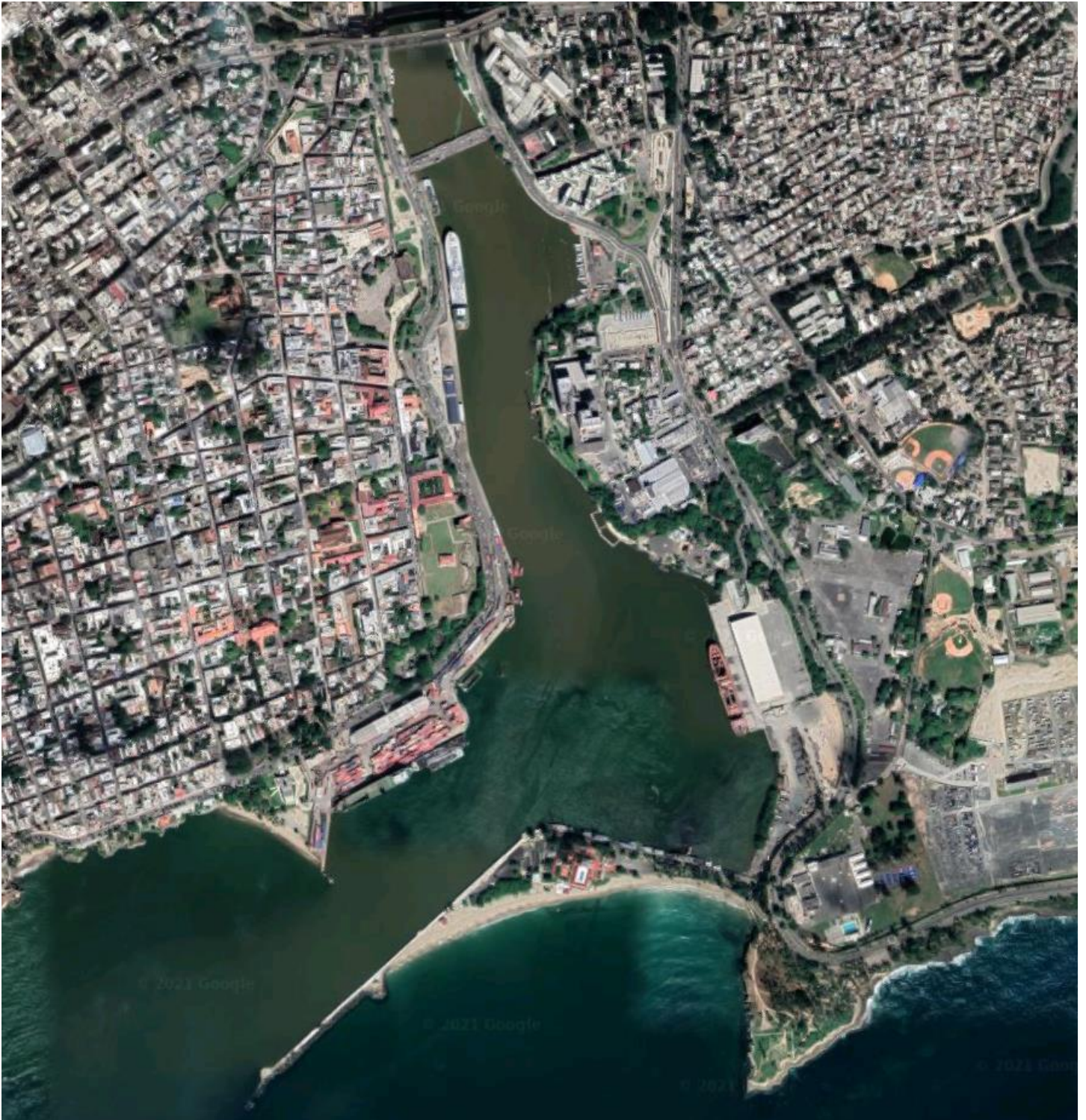


Latitude: 18°28.000'N
Longitude: 069°53.000'W
World Port Index No: 11040.
D.R Chart: 25449
B.A Chart: 467
D.M.A Chart: 25848

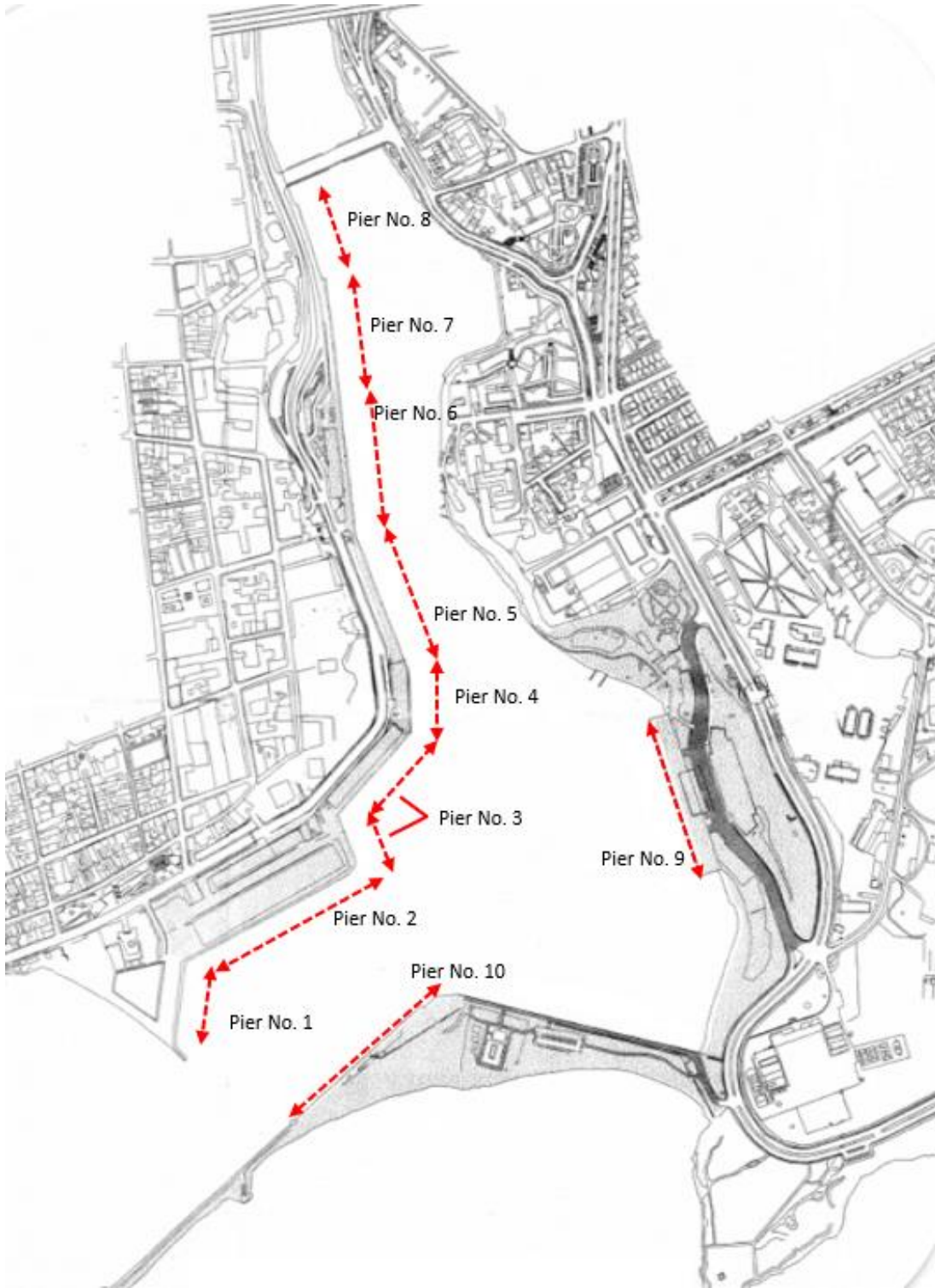
Admiralty Sailing Directions West Indies Pilot Vol. 1 (NP 70)
Admiralty List of Lights and Fog Signals Volume J (NP 82)

Time Zone GMT -4
UN/LOCODE: DO SDQ.

Satellite View



Pier Distribution



Nautical Chart



PROYECCION MERCATOR
DATUM HORIZONTAL WGS - 84
ESCALA 1:10,000

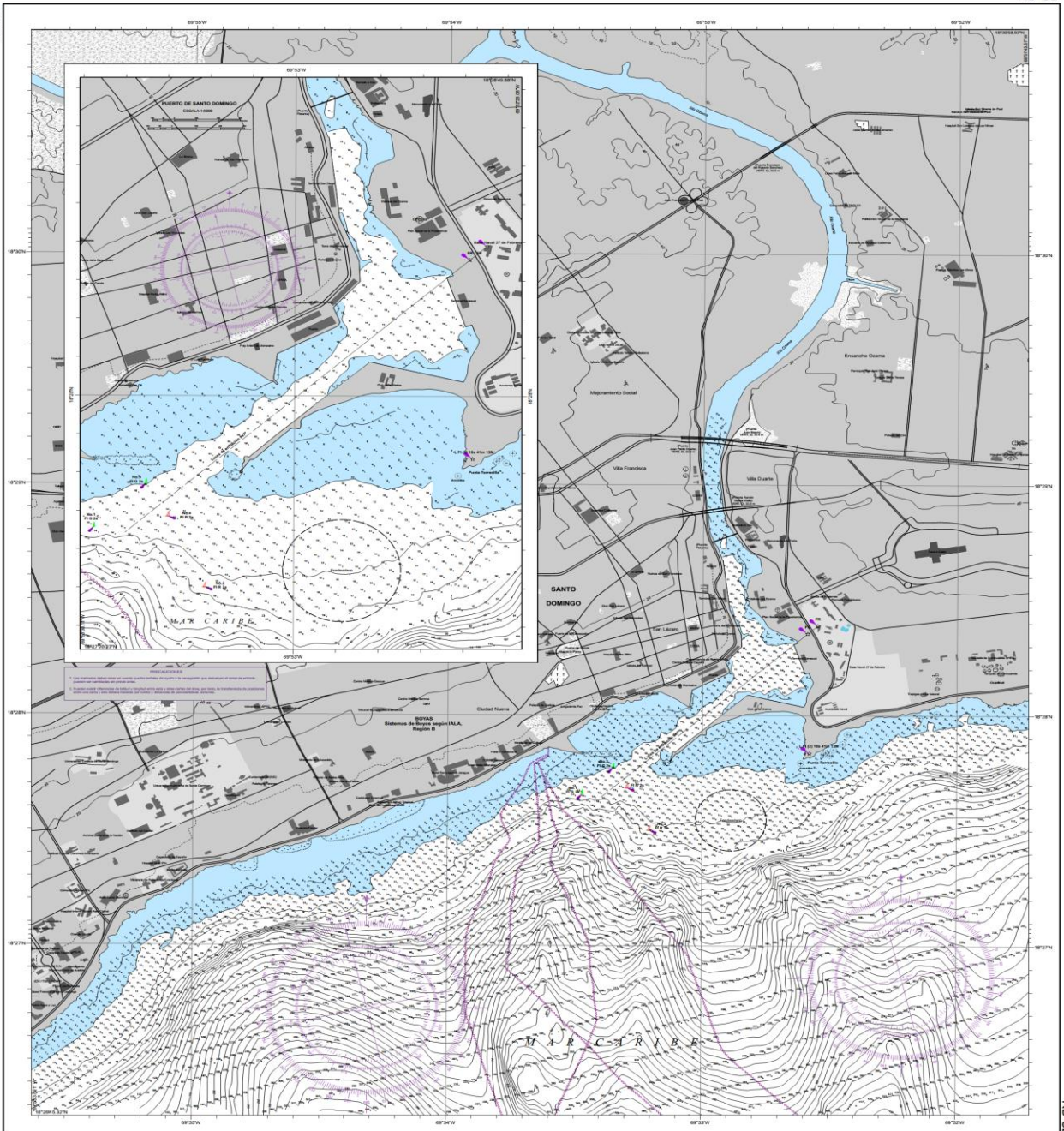


ANTILLAS MAYORES
REPUBLICA DOMINICANA - COSTA SUR
PORTUANO PUERTO DE SANTO DOMINGO
Según levantamiento realizado en 2017 por el Servicio Hidrográfico,
Armada de República Dominicana en colaboración con Dragados del Caribe, S.A.S.
Línea de costa y planimetría basadas en fotos ortorectificadas de 2005
1ra. Ed. Junio 12, 2017



SONDEOS EN METROS Y DECIMETROS
relativos al nivel medio de las mareas
ALTURAS EN METROS SOBRE EL NIVEL MEDIO DEL MAR

RD-SD



RD-SD

SONDEOS EN METROS

Preparado y publicado por el
SERVICIO HIDROGRAFICO, ARMADA DE REPUBLICA
DOMINICANA e INSTITUTO CARTOGRAFICO DEL MAR
en colaboración con DRAGADOS DEL CARIBE, S.A.S.

Portuano Puerto de Santo Domingo
sondeos en metros - ESCALA 1:10,000



General Information




"SANSOUCI, The Port of Santo Domingo" is a multipurpose port, with areas developed, integrated, and destined to provide a complete, attractive, and exclusive service for cruise and cargo ships. The Port of Santo Domingo has:

- More than 1,600 meters of piers.
- A 450-meter turning basin for maneuvers protected by the coastal breakwater.
- A depth in the channel of 11 meters and 120 meters wide.

Located in the heart of the city of Santo Domingo at the mouth of the Ozama River, 9 nautical miles southwest - west of the Haina River Port and 21 miles east - southeast of the Punta Caucedo Port., on the southeast coast of Hispaniola Island. It is managed under concession by SANSOUCI since 2005, it is known for:

- To be the **leading port operator in vehicle** processing in the Dominican Republic.
- To be a commercial, tourist and cultural link between the **Dominican Republic and Puerto Rico** through Ferries del Caribe.
- Being the only port in the city of Santo Domingo that carries out passenger operations.



Due to its position in the river, the port is subject to continuous sedimentation, so the indicated depths may vary. For updated information, please contact: Sans Souci ports S.A. or visit our website: <http://www.sansouci.com.do>.

Anchorage Area: The Deepwater anchorage area is available at the outer port entrance. The Dominican Port Authority will indicate the best position through the local pilot. The anchoring area is 2.5 cables south of the breakwater.

Pilotage: The pilot is compulsory and can be contacted by VHF channels 16 or 12, terminal assistance is also available. Pilot boarding position is approximately 1 mile south of the breakwater. Estimated time from pilot station to dock is 20 min and the maximum speed is 6 knots.

Tidal range and flow: Average range 0.30 m. The river current (southeast) has a normal speed of 1.5 knots, but in the rainy season may reach a speed between 4.5 knots and 8.0 knots

Winds details:

- September-April: North - North East (5 - 15 Knots)
- May-August: East - South East (5 - 15 Knots)

Water Density: This is determined by the location of the dock, the time of the year (rainy or dry) and the state of the tides. The exact density may vary from 1.008 to 1.016. For more information, contact the Terminal.

Tugboat services: Available around the clock, mandatory for the entrance and departure maneuver of the port. Six (6) tugs from 30.00 BP to 65.00 BP, are available in port for all maneuvers when requested. Not mandatory for cruise ships.

Restrictions: No air draft restrictions.

Immigration Offices: There is immigration personnel at all port terminals.

Port Representatives

Executive Director: Gabriel Rodriguez

Office: 809-685-9337 Ext- 201

Cellphone: 829-452-3079

Email: gabriel.rodriguez@sansouci.com.do

Facility Security Officer (PFSO): Bolivar Marmolejos

Office: 809-685-9337 Ext-202

Cellphone: 829-599-6369.

Email: bolivar.marmolejos@sansouci.com.do

Operations Director: Carlos Faulkner

Office: 809-685-9337 Ext-246

Cellphone: 829-599-6367.

Email: carlos.faulkner@sansouci.com.do

List of Maximum LOA vessels docked at this facility



Sans Souci Terminal

Mein Schiff 5 (IMO 9753193)

GT. 98,785

LOA 295.26 (968 ft)

DWT 7,900 T Draft 8.2 M (27 ft)



Don Diego Terminal (Cruise)

Carnival Conquest (IMO 9198355)

GT. 110,239

LOA 290

DWT 10,000 T Draft 8.3 M (28 ft)



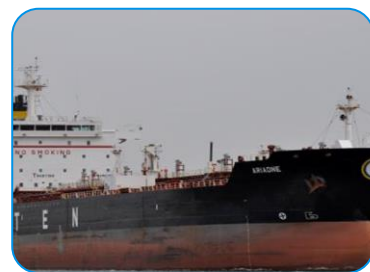
Don Diego Terminal (Cargo)

Car Carrier MV Dong a Glaucos (IMO 9441867)

GT. 72,408

LOA 232.37 M (762 ft)

DWT 26,985 T Draft 9.0 M (29 ft)



Outer Anchorage M/T Ariadne

M/T Ariadne (IMO 94641444)

GT. 94,008

LOA 292 M (958 ft)

DWT 180,010 T Draft 15 M (49 ft)

TERMINALS AND FACILITIES

1. DON DIEGO TERMINAL



Don Diego is a contemporary terminal, designed to take advantage of natural light and easy access to the Colonial City. The terminal has two reception areas for cruise ships and other types of ships, the North and South wings. This facility also offers the possibility of handling car carrier operations. This terminal has a large parking lot for visitors, specially designed for buses of tourist companies. Besides an integral system of illumination that includes all the outer perimeter of the Terminal, for greater security and nocturnal visibility to the visitors; The dock area is surrounded by an interlocking fence and has a safe circulation zone with restricted access. The terminal also has CCTV security systems, as well as specialized personnel in port security applying the ISPS code. Direct water is available on the pier.

TERMINAL DETAILS

Don Diego has three piers: Pier No. 6 south, pier No. 7&8 located to the North.

CONCEPT	PIER #6	PIER #7	PIER #8
Length of the pier	200 meters	200 meters	139 meters
Height above sea level	2.36 meters	3.12 meters	2.17 meters
Width of the pier	20 meters	10 meters	5 meters
Depth	9.5 meters	9.5 meters	8 meters

CONCEPT	DESCRIPTION
Fenders	Total: 39 Type: Arch 2.7 meters
Bollards	Total: 20 Capacity: 100 tons Space between them: 20 meters

2. SANSOUCI TERMINAL



Sansouci Terminal is a very modern homeport cruise and multipurpose terminal, combining essentials in design, flexibility in space and lighting; this terminal has the capacity to handle more than 5,000 passengers, with a modern lounge for the crew. It has a fast and efficient flow design that makes the passenger carry out their processes according to their expectations.

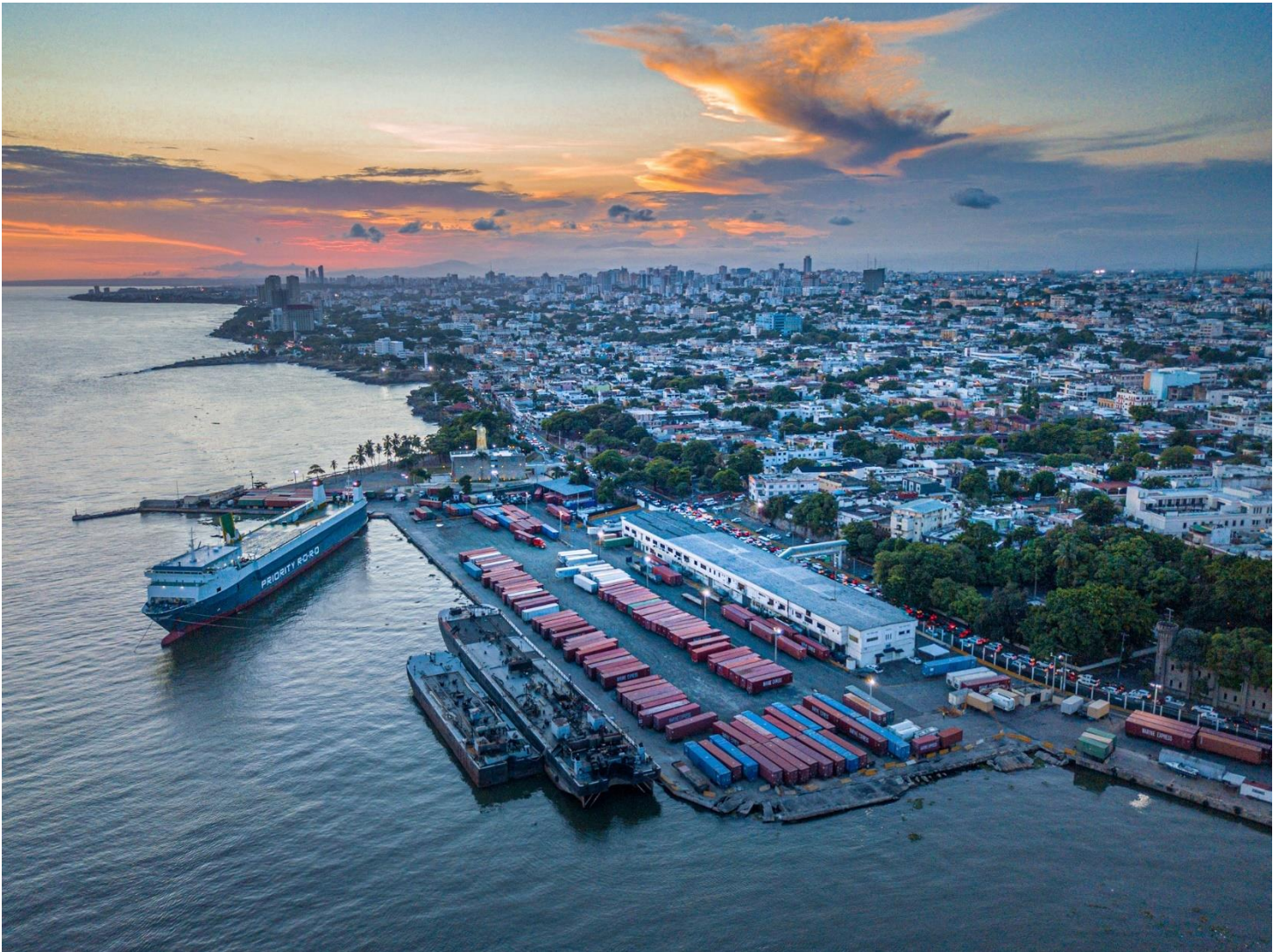
The terminal also offers other facilities, such as: large areas for baggage handling, loading, and unloading of provisions, services, and supplies. The parking area is very wide and appropriate with great capacity to place many vehicles, buses, taxis, tours, among others. It has a complete system of security and CCTV monitoring, metal detectors and fire detection. Sansouci is the largest and leading terminal in the handling of car carriers operations. Direct water pipe system available on the dock for the ships.

TERMINAL DETAILS

CONCEPT	PIER #9
Length of the pier	250 meters
Berthing area	50 meters south, 12 meters north
Height above sea level	2.40 meters
Width of the pier	27 meters
Depth	11 meters

CONCEPT	DESCRIPTION
Fenders	Total: 11 Type: Cylindrical type of 1.21 meters (width) and 2.40 meters (long)
Bollards	Total: 17 Capacity: 75/100/150 tons Space between them: 25 meters

3. SANTO DOMINGO TERMINAL



Is the oldest terminal of the Port; it has been totally renovated as part of an integrated rehabilitation project of the port of Santo Domingo, this area is dedicated to the storage of containers and loose cargo. With its main dock and a total of two warehouses to store the export and import cargo. It has exclusive specialized **internal** area for vehicles verification, for passengers that travel through the Ferry between **Puerto Rico and** Santo Domingo back and forth. In this terminal you can find different commercial and state authority offices that make possible the different operations of the port, among them: Customs, Migration and Sanitation Department. Water supply is available on the piers.

TERMINAL DETAILS

Santo Domingo terminal is composed by piers 1, 2, 3, 4 and 5.

CONCEPT	PIER #1	PIER #2	PIER #3 (N/A)	PIER #4 (N/A)	PIER #5
Length of the pier	114 meters	260 meters	234 meters	94 meters	219 meters
Height above sea level	1.8 meters	1.8 meters	1.8 meters	1.5 meters	1.70 meters
Width of the pier	28 meters	10 meters	28 meters	20 meters	19 meters
Depth	8 meters	8 meters	8 meters	8 meters	9 meters

CONCEPT	DESCRIPTION
Fenders	Total: 48 Type: Cylindrical type of 1.21 meters (width) and 2.40 meters (long) / Truck Fenders
Bollards	Total: 15 Capacity: 75 tons Space between them: 25 meters

4. PUNTA TORRECILLA TERMINAL



The newest terminal of the Port of Santo Domingo located in front of Santo Domingo Terminal, is a terminal dedicated to tanker ships that handles cargo like AC-30 and fuel oil, it is also .

TERMINAL DETAILS

CONCEPT	PIER #10
Length of the pier	124 meters
Height above sea level	3.65 meters
Height from the fender to sea level	2.40 meters
Width of the pier	8.9 meters
Depth	10 meters

CONCEPT	DESCRIPTION
Fenders	Total: 18 Type: Block tire type of 0.45 meters (width) and 1.70 meters (long) Space between them: 4.5 meters
Bollards	Total: 8 Capacity: 50/100 tons Space between them: 20 meters

5. VEHICLE STORAGE



SANSOUCI has a dedicated warehouse for handling vehicles with the capacity to store more than 7,000 units. It is managed together with Fast Auto Logistics, a logistics operator specialized in handling ro-ro cargo using the highest technology.

Including:

- 99,500 m2 available for vehicle storage.
- 800 m2 of roofed warehouse.

Services offered
Storage
Vehicle heating (ignition service)
Freight forwarding
Inflation service of tires.
Perimeter area with trenches.
Land compacted with anti-mud product.
State-of-the-art technology.

6. BARTOLOME COLON MARINA



Bartolome Colón Marina is also part of the Port of Santo Domingo. Ideal for pleasure craft, it offers a unique panoramic view of the Colonial City. It has 192 m of berthing line with an average depth of 6 feet. It has space for mooring and anchorage of 29 yachts. In addition, it has a square of 3,092 m² and green areas of 8,799 m². It offers 24-hour security through a closed-circuit TV system.

Services offered:
12 power meters
25 mooring buoys)
Offices and commercial spaces
Bathrooms.
Parking spaces
Access control and two inputs
24 hours security.
Outdoor lighting