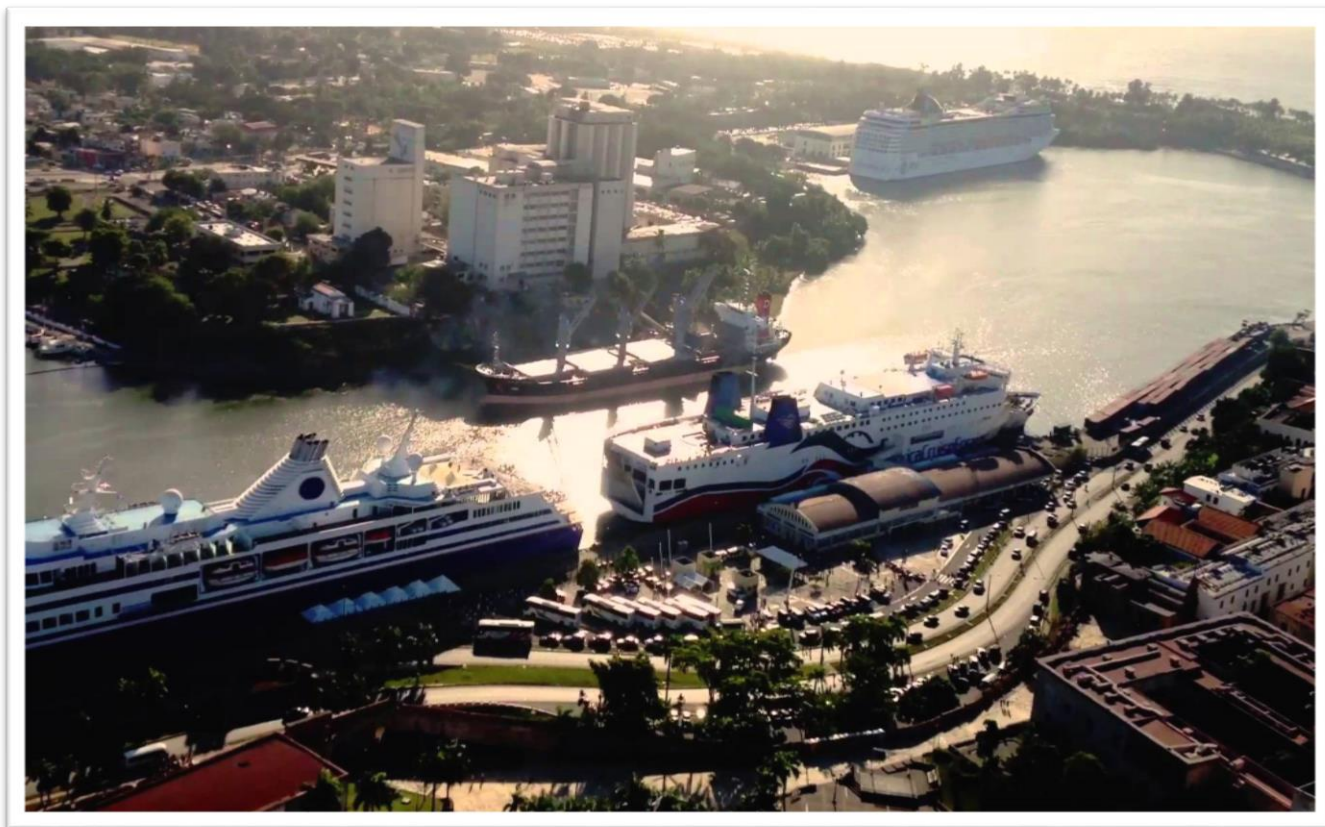


Port Handbook



SANSOUCI PUERTO SANTO DOMINGO

Latitude: 18°28.000'N LONG 069°53.000'W

World Port Index No: 11040.

**D.R Chart: 25449 B.A Chart: 467 D.M.A Chart:
25848**

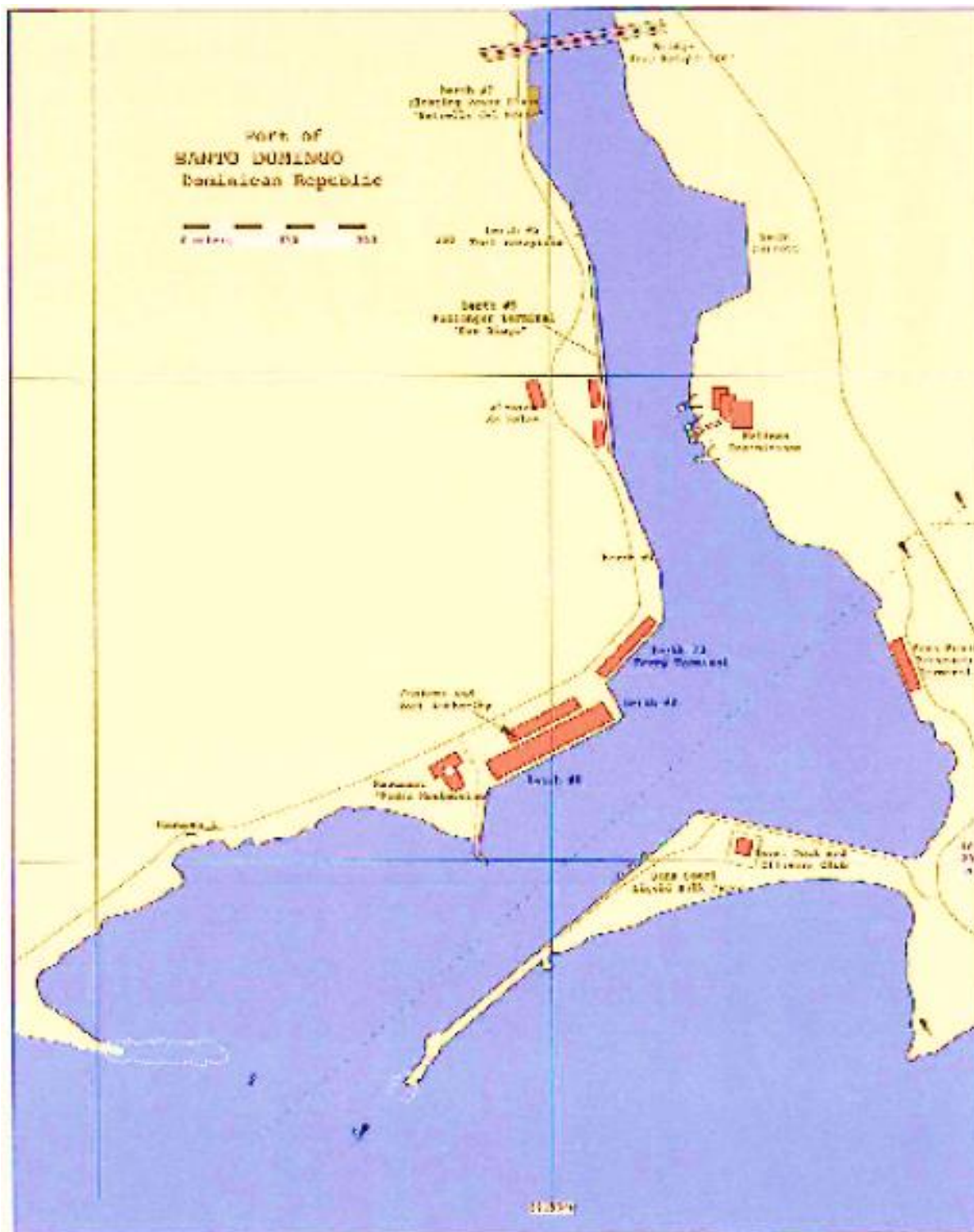
**Admiralty Sailing Directions West Indies Pilot Vol. 1
(NP 70)**

**Admiralty List of Lights and Fog Signals Volume J
(NP 82)**

Time Zone GMT -4

UN/LOCODE: DO SDQ.

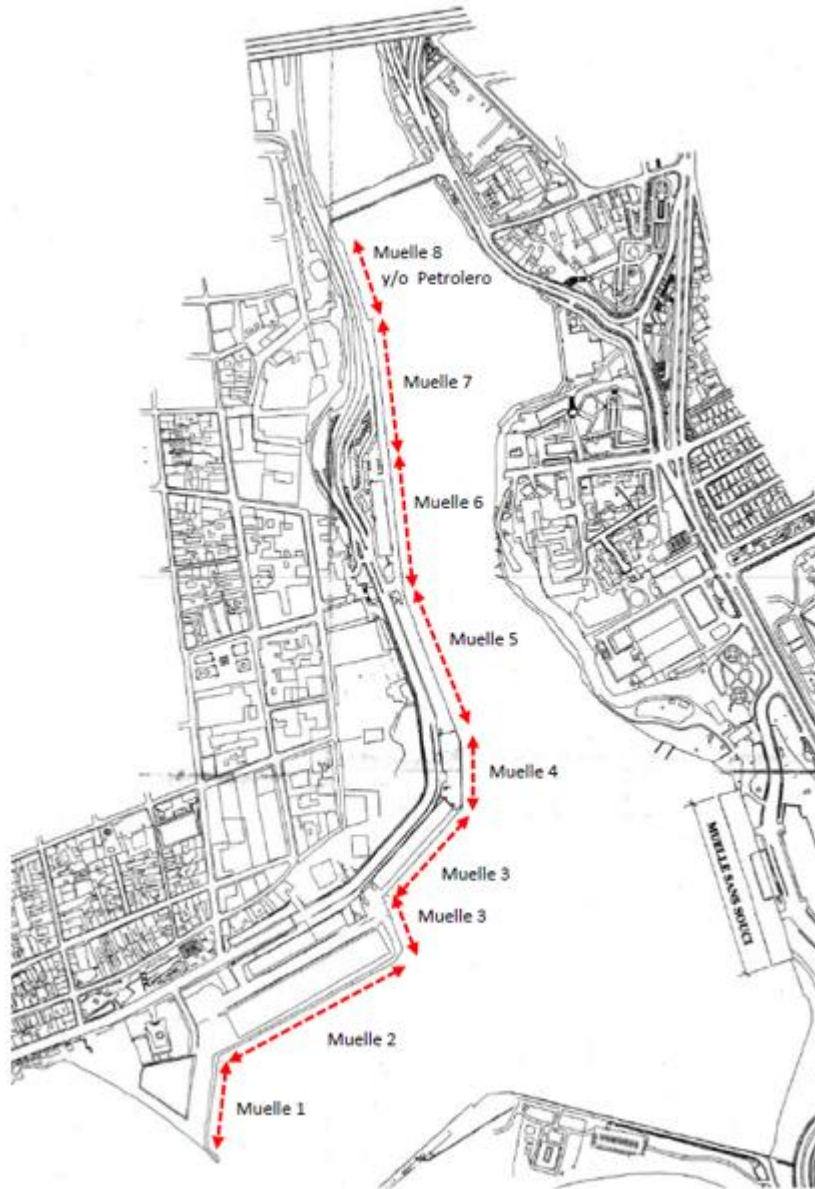
Port Map



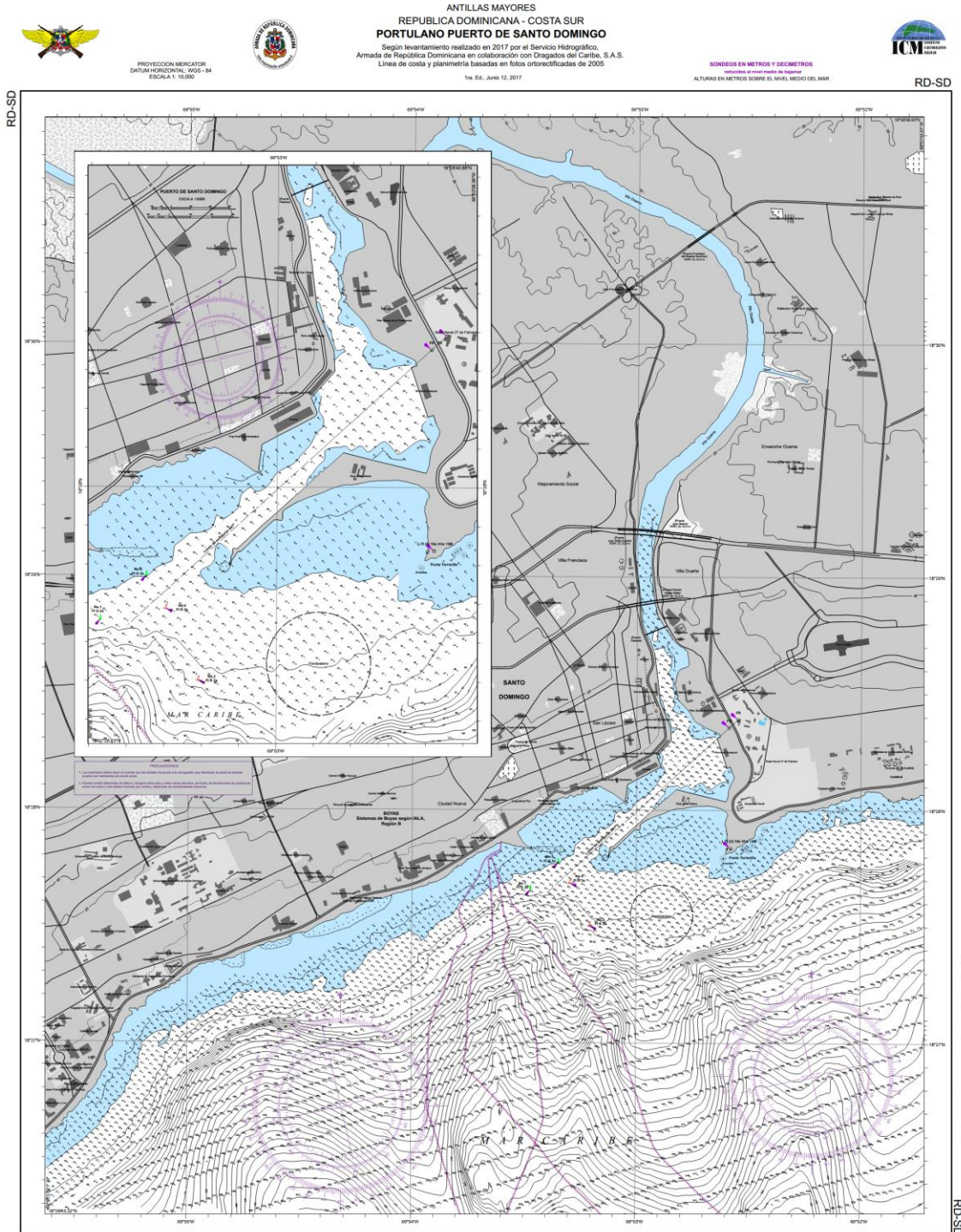
Satellite View



Pier Distribution



Nautica Chart



RD-SD
Los datos se obtuvieron del levantamiento hidrográfico y planimétrico de 2017 realizado por el Servicio Hidrográfico, Armada de República Dominicana, en colaboración con Dragados del Caribe, S.A.S. en el marco del contrato de servicios para la actualización del Portulano de Puerto Santo Domingo.

SONDEOS EN METROS

Preparado y publicado por el Servicio Hidrográfico, Armada de República Dominicana, en colaboración con Dragados del Caribe, S.A.S.

Portulano Puerto de Santo Domingo
SONDEOS EN METROS - ESCALA 1: 10,000

GENERAL INFORMATION

"SANSOUCI Puerto of Santo Domingo" is a multipurpose port, with developed areas, integrated and destined to provide a complete, attractive and exclusive service for cruise and cargo ships. It has the capacity to handle 5,000 passengers simultaneously. The Port of Santo Domingo contains more than 1,600 meters of wharves and a turning basin of 450 meters for the maneuvering sheltered by coastal breakwaters with a depth in the channel of 11 meters and 120 meters of width. Santo Domingo is the oldest permanent European city in the Western Hemisphere, the first base of the New World for colonial Spain. Located at the mouth of the Ozama River, 9 nautical miles to the southwest west of Port Rio Haina and 21 miles east southeast of the Port of Punta Caucedo, on the southeast coast of the island of Hispaniola. The city of Santo Domingo was declared a World Heritage Site by UNESCO in 1990. As a result of its position in the river, the port is subject to continuous sedimentation, so that the indicated depths may vary. For the most updated information, contact Sans Souci ports S.A. <http://www.sansouci.com.do/>

Anchorage Area: The Deepwater anchorage area is available at the outer port entrance. The Dominican Port Authority will indicate the best position through the local pilot. The anchoring area is 2.5 cables south of the breakwater.

Pilotage: The pilot is compulsory and can be contacted by VHF channels 16 or 12, terminal assistance is also available. Pilot boarding position is approximately 1 mile south of the breakwater. Estimated time from pilot station to dock is 20 min and maximum speed of 6 knots

Tidal range and flow:

Average range 0.30 m. The current in the river (southeast) has a normal speed of 1.5 knots, but in the rainy season may reach from 4.5 knots to 8.0 knots.

Winds details:

- September-April → North-North East (5 – 15 Knots)
- May-August → East – South East (5 – 15 Knots)

Water Density: This is determined inside the port, depending on the location of the dock, the time of the year (rainy or dry) and the state of the tides. The exact density may vary from 1.008 to 1.016. For more information, contact the Terminal.

Tugboat services: Available around the clock, mandatory for the entrance and departure maneuver of the port. Six (6) tugs from 30.00 BP to 65.00 BP, are available in port for all maneuvers when requested.

Note: Not mandatory for cruise ships.

Restrictions: No air draft restrictions.

Immigration Offices: There is immigration personnel at all port terminals.

PORT REPRESENTATIVES

SANSOUCI PUERTO SANTO DOMINGO, EXECUTIVE DIRECTOR

NAME: JAIME CASTILLO
 OFFICE: 809-685-9337 EXT- 201
 CELLPHONE: 829-452-4205
 EMAIL: JCASTILLO@SANSOCOUCI.COM.DO

SANSOUCI PUERTO SANTO DOMINGO, FACILITY SECURITY OFFICER (PFSO)

NAME: RAFAEL DURAN
 OFFICE: 809-685-9337 EXT-223
 CELLPHONE: 829-679-5882.
 EMAIL: RDURAN@SANSOUCI.COM.DO

SANSOUCI PUERTO SANTO DOMINGO, TRAFFIC OFFICER

NAME: BOLIVAR MARMOLEJOS
 OFFICE: 809-685-9337 EXT-202
 CELLPHONE: 829-599-6369.
 EMAIL: BMARMOLEJOS@SANSOUCI.COM.DO

SANSOUCI PUERTO SANTO DOMINGO, PORT CAPTAIN.

NAME: DICKSON RIVAS.
 OFFICE: 809-747-9430.
 CELL PHONE: 809-747-9430
 EMAIL: DICKSON.RIVAS@SANSOUCI.COM.DO

LIST OF MAXIMUM LOA VESSELS DOCKED AT THIS FACILITY

<u>Sansouci Passenger Terminal</u>	<u>Don Diego Terminal</u>	<u>Outer Anchorage</u>
CRUISE SHIP MEIN SCHIFFS 5 IMO NUMBER 9753193	CAR CARRIER MV DONG A GLAUCOS IMO NUMBER 9441867	M/T ARIADNE IMO NUMBER 9464144
GT 98785	GT 72408	GT 94008
LOA 295.26 (968 ft)	LOA 232.37 M (762 ft)	LOA 292.0 M (958 ft)
DWT 7900 t Draft 8.2 M (27 ft)	DWT 26985 t Draft 9.0 M (29.0 ft)	DWT 180010 t Draft 15.0 M (49 ft)
APRIL 2017	JULY 2016	2013-02-2014.

SANSOUCI PUERTO SANTO DOMINGO TERMINALS AND FACILITIES



DON DIEGO TERMINAL

Don Diego is a contemporary terminal with a functional design, designed to take advantage of natural light and easy access to the Colonial City. The terminal has two reception areas for cruise ships and other types of ships, the North and South wings. This facility also offers the handling of vehicles ships operations, which is very convenient for customers in this area. This terminal has a large parking lot for visitors, specially designed for buses of tourist companies. Besides an integral system of illumination that includes all the outer perimeter of the Terminal, for greater security and nocturnal visibility to the visitors; The dock area is completely surrounded by an interlocking fence and has a safe circulation zone with restricted access. The terminal also has CCTV security systems, as well as specialized personnel in port security applying the ISPS code. Direct water is available on the docks.

TERMINAL DETAILS

Don Diego has three docks: Pier No 6 south, pier No 7 located to the North and Dock No 8.

Total Length of Pier: 539 m, including the three piers. Pier No 8: 139 m. TDD Pier 7: 200 m. TDD Pier 6: 200 m.
-Height above water surface: Pier No. 8: 2.17 M. Pier 7: 3.12 M. Pier 6: 2.36 M.
- Width of the Pier: Pier 8: 05 m. Dock 7: 10 m. Pier 6: 20 m.

-Fenders: Type of arch of 2.7 meters.
-Space between bollards: 15 m.
-Bollards Capacity: 75 tons
- Depth: 10.0 M. (TDD springs 6-7) Dock No 8: 8 M.
- Number of Bollards: 27
-Total Fenders: 51



SANSOUCI TERMINAL

Sansouci terminal is a very modern Homeport and multipurpose terminal, combining essentials in design, flexibility in space and lighting; this terminal has the capacity to handle about 5000 passengers, with a modern lounge for the crew. It has three levels and a Gangway for the transit of passengers, from the ship to the terminal. (Optional Use). It has a fast and efficient flow design that makes the passenger carry out their processes according to their expectations. The terminal also offers other facilities, such as: large areas for baggage handling, loading and unloading of provisions, services and supplies. The parking area is very wide and appropriate with great capacity to place a large number of vehicles, buses, taxis, tours among others. It has a complete system of security and CCTV monitoring, metal detectors and fire detection. Sans Souci, is the largest and leading terminal in the handling of vehicles. Direct water pipe system available on the docks.

TERMINAL DETAILS

-Length of Pier: 250 meters.
- Berthing Area: 40 meters south, 10 meters north
- Height of the pier on water surface: 2.40 meters.
- Width of Pier: 27 meters.

- Fenders: cylindrical type of 1.21 m. (Width) 2.40 m (Long)
-Space between bollards: 25 m
-Bollards Capacity: 100 tons
- Depth: 10 meters.
- Number of Bollards: 15.
- Total Fenders: 11.



SANTO DOMINGO TERMINAL

It the oldest terminal of the Port; it has been totally renovated as part of an integrated rehabilitation project of the port of Santo Domingo, this area is dedicated to the storage of containers and loose cargo. With its main dock and a total of two warehouses to store the export and import cargo. It has exclusive specialized internal area for vehicles verification, for passengers that travel through the Ferry cack and forth between Puerto Rico and Santo Domingo Back and Forth. In this terminal you can find different commercial and state authority offices that make possible the different operations of the port, among them: Customs, Migration and Sanitation Department. water supply is available on the docks..

TERMINAL DETAILS

Santo Domingo terminal is compose by docks 1, 2, 3, 4 and 5.

-Length of Piers: 941 m, including all five piers. Pier 1: 114 M. Pier 2: 280 M. Pier 3: 234 M. Pier 4: 94 M. Pier 5: 219 M.
-Height above water surface: 1: 1.8 m. Pier 2: 1.8 m. Pier 3: 1.8 m. Pier 4: 1.5 m. Pier 5: 1.70 m
- Width of the Piers: Pier 1:28 m. Pier 2: 10 m. Pier 3: 28 m. Pier 4: 20 m. Pier 5:19 m.

- Fenders: cylindrical type of 1.21m. (Width) 2.40 m (Length)
-Space between Bollards to 25 m.
-Bollards Capacity: 75 tons
- Depth: 8 M. (Piers 1,2,3,4 and 5)
- Number of Bollards: 28
- Total Fenders: 48.



VEHICLE STORAGE

Area designated for imported and transit vehicles arriving at the Port of Santo Domingo. It is a highly protected area, monitored through CCTV 24 hours a day.

Including:

- 99,500 m2 available for vehicle storage.
- 800 m2 of roofed warehouse.
- Total storage capacity of vehicles: 7,000 units.

Services available:

Services offered at this facility include:
- Storage
- Freight forwarding
- Vehicle heating (ignition service)
- Inflation service of tires.
- Perimeter area with trenches.
- Land compacted with anti-mud product.
- State-of-the-art technology.



BARTOLOME COLON MARINA

Bartolome Colón Marina is also part of the Port of Santo Domingo. Ideal for pleasure craft, it offers a unique panoramic view of the Colonial City. It has 192 m of berthing line with an average depth of 6 feet. It has space for mooring and anchorage of 29 yachts. In addition, it has a square of 3,092 m2 and green areas of 8,799 m2. It offers 24 hour security through a closed circuit TV system.

The Marina Bartolome Colón has the following facilities:

- 12 power meters
- 6 feet of water
- 25 mooring buoys
- Offices and commercial spaces
-02 Bathrooms
- 150 parking spaces
- Access control and two inputs
- 24 hour security
- Outdoor lighting.



SANS SOUCI PARKING

Is a parking infrastructure for vehicles and buses built to serve t the city and areas surrounding the port, as well as, for the great utility of the tourism sector visiting our Colonial City and its premises. It is located within the facilities of Bartolome Colon Marina. It has 65,000 square meters of construction, distributed in two levels - both exteriors - and has capacity for 101 light vehicles, 53 buses and three parking spaces reserved for people with disabilities, the elderly and pregnant women. It has independent pedestrian entrance, automated system for access control and is monitored 24 hours through a permanent closed circuit, which guarantees the security of visitors and vehicles.

DOCUMENT HISTORY

28/08/2017 – Initial Document